



# Guide to Care

Our family *caring* for yours.

**Welcome to Trinity Health IHA Medical Group.** We are here for you, with nearly 1,000 health care providers in over 125 locations close to your home or work. Please use this guide or go online at [IHAcare.com](http://IHAcare.com) to learn more about our team and how we may care for you and your family.

## Free Patient Events

### meet the pediatric providers

Our pediatric practices hold monthly group meetings for expectant parents and parents of potential new patients. Ask questions, learn about our practice philosophy, office hours and more!

**Scan the QR code to register!**



### Life with Baby Post-Partum Class

Mom, Baby + Partner (2-4 weeks old)

**First Tuesday  
of the Month  
6:00 PM**

**Scan the  
QR code to  
register!**



### Wednesday Wellness Education Series

Twice each month, one of our leading providers, physicians or surgeons will present on a variety of topics.

**Scan the QR code to register!**



### Third Trimester Class

FOR NEW  
MOMS  
+ LABOR  
COACHES

**Third Wednesday  
of the Month  
7:00 PM**

**Scan the  
QR code to  
register!**



## Important Numbers

IHA Medical Group  
Call Center  
**844-IHA-DOCS**

Trinity Health Patient  
Business Services (Billing)  
**800-494-5797**

Trinity Health MyChart  
Patient Portal support line  
**844-982-4278**

IHA Medical  
Group Imaging  
**734-434-0539**

[IHAcare.com](http://IHAcare.com)





# URGENT CARE

We are here to care for you seven days a week, both in-person and virtually.

## Brooklyn

212 S. Main St., Suite B  
Brooklyn, MI 49230

P: 517-938-6085  
F: 517-938-6086



## Canton

1600 S. Canton Center Rd.  
Canton, MI 48188

P: 734-844-8743  
F: 734-844-8744



## Chelsea

14288 E. Old US Highway 12  
Suite 400  
Chelsea, MI 48118

P: 734-327-6115  
F: 734-327-1164



## Domino's Farms

4200 Whitehall Dr.  
Suite 150  
Ann Arbor, MI 48105

P: 734-995-0308  
F: 734-995-0425



## East Brighton

5505 S. Old US 23, Suite 200  
Brighton, MI 48116

P: 810-494-6810  
F: 810-494-6805



## EMU

1065 North Huron River Dr.  
Suite 200  
Ypsilanti, MI 48197

P: 734-896-4112  
F: 734-896-4113



## Hamburg

10020 Professional Centre Dr.  
Suite 120  
Hamburg, MI 48139

P: 810-231-6080  
F: 810-231-0256



## Howell

202 W. Highland Rd.  
Howell, MI 48843

P: 517-338-9084  
F: 517-338-9091



*Imaging hours may vary.  
Please call ahead.*

## Milan

870 E. Arkona Rd., Suite 105  
Milan, MI 48160

P: 734-222-4150  
F: 734-222-4151



## Saline

7115 E. Michigan Ave., Suite 200  
Saline, MI 48176

P: 734-977-0197  
F: 734-977-0218



## Schoolcraft Campus

19000 St. Joe's Parkway  
Suite 140  
Livonia, MI 48152

P: 734-213-3688  
F: 734-213-3687



## Southeast Livonia

29370 Plymouth Rd.  
Suite 200  
Livonia 48150

P: 734-884-5212  
F: 734-884-5213



## South Lyon

23200 Pontiac Trail  
South Lyon, MI 48178

P: 248-486-3310  
F: 248-486-3309



## Waterford

4400 Highland Rd.  
Suite 101  
Waterford, MI 48328

P: 248-599-6190  
F: 248-618-0355



## West Arbor

4350 Jackson Rd.  
Suite 230  
Ann Arbor, MI 48103

P: 734-887-4396  
F: 734-887-4614



## Virtual Urgent Care

Scan the QR code to schedule a virtual appointment.



## What is Urgent Care?

Offering extended hours seven days a week including holidays, IHA Urgent Care is just what the patient ordered. No more waiting for hours in an Emergency Room, now you have a quicker, more cost-effective alternative that fits your schedule... and your budget.

### We treat non-life-threatening medical conditions, such as:

- Abdominal pain (non-severe)
- Headaches
- Acute back pain and neck pain
- Colds, coughs and flu symptoms
- Cuts requiring stitches
- Conjunctivitis (pink eye)
- Sports physicals
- Flu shots
- Sore throats, ear infections and sinus infections
- Seasonal allergies
- Skin rashes
- Bumps, cuts, sprains and strains
- Most fracture care, including splinting and bracing
- Imaging
- Minor eye problems
- Minor procedures, including laceration repair
- Minor head injuries
- Mild to moderate allergic reactions
- Mild to moderate asthma
- Urinary tract infections (UTIs)



**Save Your Spot**  
[bit.ly/IHAurgentcare](https://bit.ly/IHAurgentcare)

Skip the wait and save your spot at our urgent care locations. Your saved spot is not a guaranteed appointment, but an option that allows you – or a sick family member – to seek care at a time that is convenient.



Please visit us online for the most up-to-date hours at:  
**[IHAcare.com/urgentcare](https://IHAcare.com/urgentcare)**



## Pediatric Urgent Care

### West Arbor

4350 Jackson Rd.  
Suite 230  
Ann Arbor, MI 48103

P: 734-545-1362  
F: 734-545-1363



General Ultrasound Available



X-Ray Available

# Trinity Health IHA Medical Group

## PRIMARY CARE

Learn more, find a provider  
and schedule an appointment!



### LENAAWEE COUNTY

#### Clinton ●

11775 Tecumseh-Clinton Hwy.  
Clinton, MI 49236

P: 517-456-7449  
F: 517-456-6059

**Family Medicine**  
Sreevali Attili, MD  
Ahmad Bilal, MD  
Adam Kosteva, MD  
Jeffrey Mendoza, DO  
Cullen Salada, MD  
Sherry Headley, CNP

### LIVINGSTON COUNTY

#### Academic Family Medicine - Brighton

Trinity Health Medical  
Center - Brighton  
7575 Grand River Ave., Suite 210  
Brighton, MI 48114

P: 810-844-7950  
F: 810-494-6895

**Family Medicine**  
Kelly Arenz, DO  
Jacquelynn Dunn, DO  
Joseph Friedli, MD, CAQSM  
Benjamin Gilbert, DO  
Kathryn Lankton, DO, IBCLC  
R. Taylor Scott, DO  
Mark Zawisa, MD, FFAFP

#### East Brighton

5505 S. Old US 23, Suite 100  
Brighton, MI 48116

P: 810-494-6885  
F: 810-494-6839

**Family Medicine**  
Dorothea Edmunds, DO  
Aurielle Fanning, MD  
Aaron Heller, DO  
Steven Korycinski, MD  
Devon Newsom, DO  
Raymond Smith, MD  
Donna Vorias, MD  
Cali Snyder, CNP

#### New September 15 Lifestyle Medicine Primary Care

East Brighton  
5505 S. Old US 23, Suite 100  
Brighton, MI 48116

P: 734-887-7888  
F: 734-887-7889

Alberto Nacif, MD, DipABLM

#### Genoa ●

2305 Genoa Business Park Dr.  
Suite 200  
Brighton, MI 48114

P: 810-494-6840  
F: 810-494-6841

**Family Medicine**  
Miranda Bassett, DO  
David Bavers, MD  
Robert Camilletti, DO, MPH  
James P. Gallagher, II, DO  
Stacie Griffin, MD  
Rebecca Pawlik, MD, DABOM  
Rebecca Tostige Ruthberg, MD  
Melissa Zimmerman, MD  
Lindsay Tarachowski, CNP

#### Hamburg

10020 Professional Centre Dr.  
Suite 120  
Hamburg, MI 48139

P: 810-231-0252  
F: 810-231-0256

**Internal Medicine**  
Nancy Carbajo, MD  
Brandon Coy, DO  
Rodney Dewyer, MD  
Stephanie Peterson, MD  
Rachel Walk, DO

#### Howell

202 W. Highland Rd.  
Howell, MI 48843

P: 517-234-6540  
F: 517-338-9083

**Family Medicine**  
Ariela Alonso, DO  
Kristyn Delecki, DO  
Kathleen Duchak, MD  
Nicole Frey, DO  
Michael Paulson, DO  
John B. Rasor, DO  
Tonya Sexton, DO  
Benjamin Taggart, DO  
Suma Thomas, DO  
Erin Obsniuk, CNP  
Elle Van Overmeer PA-C

**Internal Medicine**  
Bassel Atasi, MD ■  
Aaron Daniel, MD ■  
Carranda Koop, MD  
■ Internal Medicine/Pediatrics

#### Pinckney ●

10200 Dexter-Pinckney Rd., Suite 100  
Pinckney, MI 48169

P: 734-878-1000  
F: 734-878-1001

**Family Medicine**  
Kevin Chu, MD  
Logan Borgelt, MD  
Michael DeBacker, MD  
Christopher Sung, DO  
Nicole Ehinger, CNP

**Internal Medicine**  
Michelle Carveth, MD ■  
Kelsey Scott, MD

### JACKSON COUNTY

#### Brooklyn ●

212 S. Main St., Suite A  
Brooklyn, MI 49230

P: 517-592-8033  
F: 517-592-3959

**Family Medicine**  
Chloe Baland, MD  
Kristen Bracklein, DO  
Eric Wandschneider, MD  
Julayne Brigham, PA-C  
Shari Page, DNP

### OAKLAND COUNTY

#### Bloomfield

43097 Woodward Ave., Suite 100  
Bloomfield Twp., MI 48302

P: 248-836-0040  
F: 248-836-0042

**Family Medicine**  
Dalia Alhusein, DO  
Michele Blumberg, DO  
Nora Dagher, DO  
Rhonda Gumma, DO  
Daniel Meram, MD

#### Clarkston ●

6770 Dixie Highway, Suite 303  
(Relocating temporarily to Suite 202  
beginning 8/25/25)  
Clarkston, MI 48346

P: 248-625-0030  
F: 248-625-4403

**Family Medicine**  
Michelle Barbat, DO  
David McNaughton, MD  
Michael Scarchilli, DO  
Bradford Woelke, MD

**Internal Medicine**  
Tatyanna Coleman, CNP

#### Commerce

**New Practice Opening  
September 2**

4123 Martin Road, Suite 102  
Commerce Twp., MI 48390

P: 248-366-3700  
F: 248-366-1036

**Family Medicine**  
Adil Arabbo, MD  
Bethany Long, PA-C

#### Farmington Hills

28300 Orchard Lake Rd.  
Suite 103  
Farmington Hills, MI 48334

P: 248-287-7860  
F: 248-287-7861

**Family Medicine**  
Sonia J. Haque-Uddin, MD  
Adriane Marchese, MD  
Lauren Marchese, MD  
Kyle Samyn, DO

### Henderson Academic Primary Care

Woodward Professional Building  
44428 Woodward Ave., Suite 102  
Pontiac, MI 48341

P: 248-858-3126  
F: 248-858-6499

Michael Barnes, MD  
Benjamin Diaczok, MD  
Jacky Duong, DO  
Geetha Krishnamoorthy, MD  
Kathren Shango, MD  
Anupam Sule, MD  
Bradford Woelke, MD  
Katie Zechar, MD

#### Lake Orion ●

1375 S. Lapeer Rd., Suite 210  
Lake Orion, MI 48360

P: 248-693-5700  
F: 248-693-5715

**Family Medicine**  
Kevin Do, DO  
Laura Sychta, DNP

**Internal Medicine**  
Timothy Dickson, MD ■  
Amy McCarthy, MD ■  
Kathryn Rice, MD ■

#### Rochester Hills ●

1854 W. Auburn Rd., Suite 100A  
Rochester Hills, MI 48309

P: 248-696-3170  
F: 248-696-3175

**Family Medicine**  
Victoria J. Torgler, DO

**Internal Medicine**  
Walter Culver, MD ■

#### South Lyon

23200 Pontiac Trail  
South Lyon, MI 48178

P: 248-446-2935  
F: 248-446-2936

**Family Medicine**  
Natalie Baer, MD  
Lauren Carney, DO  
Elizabeth Morelli, MD  
Martin Tinkerhess, MD

#### Waterford ●

4400 Highland Rd., Suite 100  
Waterford, MI 48328

P: 248-618-6000  
F: 248-618-6951

**Family Medicine**  
Michele Blumberg, DO  
Derek Foster, DO  
Vincent Hannosh, MD  
Hadeel Razook, MD  
Daniel Warden, MD  
Brenda Pope, CNP  
Shibani Tipnis, CNP

**Internal Medicine**  
Leslie Caren, MD ■  
Paunel Grivej, MD  
Elyse Hewitt, DO  
Nashwan Yousif, MD



Learn about academic practices on page 18

## WASHTENAW COUNTY

### Academic Internal Medicine - Ann Arbor Campus

Reichert Medical Center  
5333 McAuley Dr.  
Suite 4001  
Ypsilanti, MI 48197

P: 734-712-3980  
F: 734-222-4081

#### Internal Medicine

Sudha Ayala, DO  
Corey Dean, MD, FAAP, FACP  
Irina Burman, MD  
Patricia McNally, MD  
Anupam Suneja, MD

### Ann Arbor Campus

Trinity Health Towsley Medical Center  
5361 McAuley Dr.  
Ypsilanti, MI 48197

P: 734-712-1300  
F: 734-222-3665

#### Family Medicine

Maya Maliekal, DO  
Benjamin Maynard, MD  
Kaitlin Zeytuncu, MD  
Max Julien, PA-C  
Danielle Wilseck, PA-C

#### Internal Medicine

Irina Burman-Solovyeva, MD, FACP  
Daniel Cahill, MD  
Jie Dong, MD, MPAS  
Daniel Jeung, MD  
Lisa Kutas, MD  
Kevin Taylor, MD, FACP

### Arbor Park

4940 W. Clark Rd., Suite 100  
Ypsilanti, MI 48197

P: 734-971-1188  
F: 734-971-3658

#### Family Medicine

Roger Chen, MD  
Vaishali Katial, MD  
Matthew Kittle, DO  
Shannon Kusiak, MD  
Ross Schmaeman, MD  
Melissa Sokol-Keith, MD, FAAPF  
Malorie Sridhar, MD, DipABLM  
Camille Sanchez, CNP

#### Internal Medicine

Therese Benevich, MD ■  
Robert Dyksterhouse, MD

### Chelsea

14288 E. Old US 12, Suite 200  
Chelsea, MI 48118

P: 734-475-8677  
F: 734-327-0826

#### Family Medicine

Ahmed Abuzoor, MD  
James Alford, MD  
David French, MD  
Kathryn Harmes, MD  
Rebekah Hudson, DO  
Matthew G. Moore, MD

#### Internal Medicine

Shan N. Ansari, MD  
Preeya Mohan, MD  
Jyoti Sutter, MD  
Steven Yarows, MD, FACP, FASH

### Dexter

7093 Dexter-Ann Arbor Rd.  
Dexter, MI 48130

P: 734-426-9028  
F: 734-426-9029

#### Family Medicine

Michael Komrowski, MD  
Annelie Ott, MD

#### Internal Medicine

Rhonda S. Todd, MD  
Bradford Wylie, MD

### Domino's Farms

4200 Whitehall Dr., Suite 130  
Ann Arbor, MI 48105

P: 734-995-0303  
F: 734-995-0425

#### Family Medicine

Amir Alawneh, MD  
Dana O'Neill, DO  
Bianca Yaldo, MD  
Eric Feldman, PA-C  
Aurora Parsons, CNP  
Morgan Perian, PA-C  
Abi Seeber, PA-C

#### Internal Medicine

Karl Brenner, MD  
Yiding (Peter) Cai, MD  
Yara Fardous, MD  
Dorian Moore, MD  
Heather Simpkins, MD  
Tendai Thomas, MD, FACP  
Adam Vaughn, DO

### EMU

1065 North Huron River Drive  
Suite 100  
Ypsilanti, MI 48197

P: 734-896-4110  
F: 734-896-4111

#### Family Medicine

Sudha Ayala, DO  
Jessica Gable, MD  
Thuy Orlando, MD  
Lisa Whipple, DO  
Laurel Boelens, CNP, DNP  
Abi Seeber, PA-C

### Lifestyle Medicine Primary Care

Arbor Park  
4940 W. Clark Rd., Suite 100  
Ypsilanti, Michigan 48197

P: 734-887-7888  
F: 734-887-7889

Robert Breakey, MD, DipABLM

### Milan

870 E. Arkona Rd., Suite 100  
Milan, MI 48160

P: 734-439-2429  
F: 734-439-0200

#### Family Medicine

Renee Armstead, MD  
Stanley A. Forfa, DO  
Maria Heck, DO  
G. Michael Jasbeck, MD  
Jacob Johengen, DO  
Britzy Joseph, MD  
Kimberly Berke, MD  
Carla Zahuranec, MD  
Jane Imo, CNP  
Lynn Lewis, CNP  
Ashley Schwartz, CNP

#### Internal Medicine

Edward Kim, MD  
Chad Krueger, MD

### Neighborhood Primary Care - Ypsilanti

Haab Health Building  
111 N. Huron St., Suite 200  
Ypsilanti, MI 48197

P: 734-547-7977  
F: 734-572-4855

#### Internal Medicine

Bassel Atasi, MD ■  
Corey Dean, MD, FAAP, FACP ■  
Bushra Hussain, MD  
Suzette D. LaVigne, MD, MPH, FAAP ■  
Tomas Murphy, MD ■  
Sara Platte, MD, FAAP ■

### Saline

7115 E. Michigan Ave., Suite 100  
Saline, MI 48176

P: 734-977-0013  
F: 734-977-0169

#### Family Medicine

Sarah Kaminsky, DO  
Sonja Llancari, MD  
Matthew G. Moore, MD  
Danielle Purtell, MD

#### Internal Medicine

Cynthia Larson, MD, PhD

### West Arbor

4350 Jackson Rd., Suite 200  
Ann Arbor, MI 48103

P: 734-761-2581  
F: 734-761-9540

#### Family Medicine

Brian Bluhm, MD  
Michael Bruderly, MD  
Avalon Elliott, DO  
Benjamin Kaplan, DO  
Meera Krishnashastry, MD  
Yi Emily Li, MD  
Katharine Lounsberry, MD  
Allison Nesbitt, DO  
Manushi Patel, MD  
Daniel Pettit, DO  
Teleah Phillips, DO  
Aleah Thompson, MD  
Jay Lodwick, PA-C  
Amy Slotten, DNP, IBCLC  
Anne Smiarowski, PA-C  
C. Nikki Taylor, PA-C

#### Internal Medicine

Marie Amaout, DO ■  
Kristin McFadden, DO  
Gary Peppin, MD  
Ronald Sanda, MD  
Hongyan (Grace) Yang, MD, PhD ■

## Primary Care Lab Services

- Embedded Lab within Practice: Draws for all Patients
- Embedded Lab within Practice: Draws for offices patients only
- Lab within the Building

## WAYNE COUNTY

### Academic Family Medicine - Northwest Livonia

37595 Seven Mile Rd., Suite 210  
Livonia, MI 48152

P: 734-853-5694  
F: 734-430-9388

#### Family Medicine

Katelyn Bonkowski, MD  
Christine Brenner, MD \*  
Charan Cheema, DO  
Nicole B. Kohnen, MD  
Alexa Norwick, MD  
Nicole Robertson, MD  
Brittany Salisbury, MD  
David Michael Smeenge, MD  
Jonathan Stoddard, MD  
Michael Wowk, MD ◆

### Academic Internal Medicine - Northwest Livonia

37595 Seven Mile Rd., Suite 340  
Livonia, MI 48152

P: 734-793-2470  
F: 734-793-2471

#### Internal Medicine

Lisa Harston-LeDoux, MD  
Mariola Gjokaj, MD  
Mark Lindley, MD  
Tracey Sperry, DO

### Canton

1600 S. Canton Center Rd., Suite 200  
Canton, MI 48188

P: 734-398-7880  
F: 734-761-7318

#### Family Medicine

Raza Ali, MD  
Jacob Gates, MD  
Dalal Kassir, MD  
Yujing Murray, MD  
Muhareb Mustafa, MD  
Mary Nixon, MD  
Diamond Shelby, MD  
Bhavani Sundram, MD  
Jamie Galvan, CNP  
Madeline Madison, CNP  
Ashley Richmond, CNP

#### Internal Medicine

Kimberly McCord, MD ■  
Ellen B. Williams, MD

■ Internal Medicine/Pediatrics

◆ Obstetric Care

\* Pediatrician

CONTINUED ON PAGE 7







Trinity Health IHA Medical Group

## Lifestyle Medicine Primary Care

This new annual membership-based concept offers patients the following primary care and lifestyle medicine services:

### Annual in-depth health and lifestyle evaluations

- Tailored health roadmap based on six critical lifestyle pillars
- Personalized plans to prevent, manage and reverse chronic diseases

### Prioritized scheduling

- Same-day or next-day appointments
- The team, including your primary care physician, will be available to ensure all urgent health care needs are addressed. Non-urgent questions and concerns can be directed to your care team during normal business hours.

### Shared medical appointment

- Group sessions offering collective guidance and community support.

### Dedicated care management

- Specialized nurses offering education and support for chronic conditions.

### Expert health coaching

- Custom coaching sessions to help you achieve and maintain your health goals.
- Exclusive educational resources and discounts on programs that extend your learning and support network.

### Personalized meal and exercise plans

- Access to top-tier nutritionists and exercise plans that fit your unique needs.



**Robert Breakey,  
MD, DipABLM**

**Lifestyle Medicine  
Primary Care -  
Arbor Park**

4940 Clark Rd.  
Suite 100  
Ypsilanti, MI 48197



**Alberto Nacif,  
MD, DipABLM**

**Lifestyle Medicine  
Primary Care -  
East Brighton**

5505 S. Old US 23  
Suite 100  
Brighton, MI 48116



**Welcoming  
new patients.**  
Please visit us at  
our website for  
more information  
or to sign up.

For full details visit our website at: [TrinityHealthMichigan.org/LMPC](https://TrinityHealthMichigan.org/LMPC)

## Nutrition Services

Our nutrition specialists offer nutrition counseling services at many locations. Their expertise can provide you with the necessary knowledge to achieve all of your individual and family dietary needs.

- One-on-one nutrition counseling
- Easy to follow, customized eating plans to achieve/maintain a healthy weight
- Prevention/management of chronic disease through dietary and lifestyle changes
- Weight management programs
- Guidance in managing nutrition science to form healthy habits that will help you look and feel better
- Assistance with all of the misinformation about food and nutrition
- A healing approach to treating diagnosed medical conditions and their associated symptoms

# Primary Care

## WAYNE COUNTY (CONT.)

### Cherry Hill Village ●

49650 Cherry Hill Rd., Suite 120  
Canton, MI 48187

**P:** 734-398-7800

**F:** 734-398-7805

#### Family Medicine

Mohammed Abdrabbob, MD  
Emily Cox, DO  
Frank Parrinello, DO  
Nada Patel, MD  
Sachi Patel, DO  
Manuj Rattan, MD  
Sarah Otten, CNP

#### Internal Medicine

Peter Meyers, DO  
Theresa Poppe, MD, DipABLM  
Jeffrey Sweet, MD  
Kristen Yee, MD  
Jodi Lambert, CNP

### Freedom

20206 Farmington Rd.  
Livonia, MI 48152

**P:** 248-476-4724

**F:** 248-476-7091

#### Family Medicine

Randall Bickle, DO, JD, CPE  
Sudha Chakravarty, MD

#### Internal Medicine

Samuel Fawaz, MD  
Trishya Reddy, MD  
Randall Sternberg, MD

### Plymouth ●

990 W. Ann Arbor Trail, Suite 208  
Plymouth, MI 48170

**P:** 734-455-1200

**F:** 734-455-5219

#### Family Medicine

Jeffrey Chiambretti, DO  
Lauren Lumley, DO  
Kaitlyn Perkins, DO  
Lauren Schrock, MD  
Stephanie Gillman, PA-C

#### Internal Medicine

Willard Den Houter, MD  
Matthew Kohlenberg, MD ■  
Ashley Schmehl, DO  
Jeffrey Van Hooser, MD ■  
Deborah Weener, MD

### Schoolcraft Campus ●

19000 St. Joe's Parkway, Suite 200  
Livonia, MI 48152

**P:** 734-213-3685

**F:** 734-213-3686

#### Family Medicine

Sami Ahmed, MD  
Barbra Alvir, DO  
Jessica Haddad, MD  
Michelle Klink, DO  
Jenny Shih, DO  
Quentin Simmons, MD  
Alexia Stavropoulos, DO  
Kayla Garrett, CNP  
Alaina Snow, CNP

#### Internal Medicine

Michael Sanson, MD  
Sherrie Tefend, MD



## Trinity Health IHA Medical Group

# Comprehensive Geriatric Primary Care

We specialize in providing primary care to patients aged 65 and older who have a history of complex conditions that require frequent visits.

Physicians and staff provide support to aging adults and caregivers by offering a comprehensive assessment, developing a plan and making connections to local resources. Each patient completes an initial questionnaire, receives an in-depth assessment and recommendations for care or resources to enhance the quality of life.

#### Services Offered:

- Annual wellness checks
- Chronic care visits
- Immunizations
- Cognitive assessments
- Home visits
- Support in setting and achieving health goals
- Coordination and continuity of health care when moving from one health care setting to another

### Ann Arbor Campus

Trinity Health Towsley Medical Center  
5361 McAuley Drive  
Ypsilanti, MI 48197

**P:** 734-712-9968

**F:** 734-222-3106

Emily Maris, MD  
Aishah Raffee, DO, AGSF  
Amy Bakalar, CNP

### Schoolcraft Campus

Trinity Health Medical Center - Schoolcraft Campus  
19000 St. Joe's Parkway  
Suite 330  
Livonia, MI 48152

**P:** 734-884-5263

**F:** 734-884-5264

Alvin Vargas, DO  
Susan Campitelle, CNP  
Kayla Schuelke, CNP  
Talar Takessian, CNP

### Southeast Livonia ●

29370 Plymouth Rd., Suite 100  
Livonia, MI 48150

**P:** 734-655-8200

**F:** 734-655-8210

#### Family Medicine

Candace Cooper, DO  
Ali Elsaghir, MD  
Trevor Evans, DO

#### Internal Medicine

Shyran Hines-Fenderson, MD ■  
Jessica Love, MD ■  
Rachel Marcucci, MD ■  
Erin Walton-Doyle, MD ■

■ Internal Medicine/Pediatrics





# Trinity Health IHA Medical Group

# OBSTETRICS & GYNECOLOGY

At Trinity Health IHA Medical Group, we understand that women's health involves a wide range of needs, from pregnancy and routine wellness checks to complex, specialized care. Our expert team is committed to providing compassionate, high-quality support at every stage of life. We offer advanced treatment for menopause, vulvar disease, urogynecology, reconstructive pelvic surgery, and other complex gynecologic conditions, ensuring your care is as personalized as it is comprehensive.

## Academic Obstetrics & Gynecology - Ann Arbor Campus

Reichert Medical Center  
5333 McAuley Dr., Suite 2110  
Ypsilanti, MI 48197

P: 734-802-5030  
F: 734-887-8946

Grace Fritts, MD  
Pamela Davies, MD  
Lisa Jeffries, MD  
Deborah Landis Lewis, MD  
Daniel Morgan, MD  
Erika Mowers, MD  
Kelly O'Connor, MD  
Bryan Popp, MD  
Heather Wahl, MD  
Grace Mishkin, CNP, CNM

## Academic Obstetrics & Gynecology - Pontiac

Woodward Professional Building  
44428 Woodward Ave., Suite 104  
Pontiac, MI 48341

P: 248-858-6272  
F: 248-883-0059

Anan Abdelrahman, MD  
Pamela Davies, MD  
David Eisenstein, MD, FACOG

## Arbor Park

4936 W. Clark Rd., Suite 100  
Ypsilanti, MI 48197

P: 734-434-6200  
F: 734-434-7373

Kelsey Behan, MD  
Elizabeth Cappelletti, MD  
Rajiv Deenadayalu, MD  
Tamika Martin, MD  
Lisa Morris, MD ♦  
Caitlin Parker, MD  
Karen Walker, MD, MPH ♦  
Emily Amoe, CNP  
Colleen Bates, CNP

## Bloomfield

43097 Woodward Ave., Suite 202  
Bloomfield Twp., MI 48302

P: 248-334-4505  
F: 248-253-0347

Cristina Alfieri, MD, FACOG  
David Eisenstein, MD, FACOG  
Abigail Lindberg, DO  
Kelin Prokurat, DO

## Chelsea

14288 E. Old US 12, Suite 300  
Chelsea, MI 48118

P: 734-426-1925  
F: 734-426-9022

Catriona Macardle, MD, FACOG  
Katharine Micallef, DO, FACOG  
Laura Downing, MD, FACOG

## Cherry Hill Village

49650 Cherry Hill Rd., Suite 220  
Canton, MI 48187

P: 734-398-7888  
F: 734-398-7885

Lynn Baca, MD  
Ellery J. Berinstein, MD, MPH  
Katie Bernardoni, MD, FACOG  
Jade Burch, MD, FACOG  
Breanne Camilleri, MD, FACOG  
Jody Jones, MD, FACOG  
Edward Merkel, MD, FACOG  
Christine Pipitone, MD  
Kathy Kise, CNM

## Clarkston

6770 Dixie Highway, Suite 202  
Clarkston, MI 48346

P: 248-625-8555  
F: 248-625-3637

Kelin Prokurat, DO  
Peter Shaman, MD, FACOG

## Domino's Farms

4200 Whitehall Dr., Suite 330  
Ann Arbor, MI 48105

P: 734-434-0477  
F: 734-434-6240

Meghan Bugosh, MD  
Lisa Jeffries, MD  
Allison Kreske, MD  
G. Bridget Long, MD ♦  
Stephanie Menon, MD  
Jennifer O'Neill, DO ♦  
Alia Shah, MD  
Lauren Westerfield, MD, FACOG  
Katie Zdrada, MD  
Abbey Alsip, CNP  
Maureen Westfall, CNP

## Farmington Hills

28300 Orchard Lake Rd.  
Suite 100B  
Farmington Hills, MI 48334

P: 734-655-8250  
F: 734-655-8255

Anna Kalbfell, MD, FACOG

## Genoa

2305 Genoa Business Park Dr.  
Suite 220  
Brighton, MI 48114

P: 810-494-6860  
F: 810-229-7012

Leigh Christie, DO  
Julia DePorre, MD  
Andrew Doherty, MD  
Quoc V. Le, MD  
Rima Makhawala, MD  
Paul Thielking, MD  
Paula Blankenship, CNP  
Elizabeth MacDonald, CNP

## Schoolcraft Campus

19000 St. Joe's Parkway, Suite 210  
Livonia, MI 48152

P: 734-655-8250  
F: 734-655-8255

Susanne Archer, MD  
Morgan Fujimori, DO  
Candice Gates, MD, FACOG  
Michael M. Gatt, MD, FACOG ♦  
Timothy Johnson, MD, FACOG  
Anna Kalbfell, MD, FACOG  
Brittley Leppien, DO  
Paul Makela, MD, FACOG ♦  
Lauren Wichelmann, DO, MS  
Catherine Winslow, MD, FACOG ♦  
Lijia Zhu, MD, FACOG, FRCSC

## Milan

870 E. Arkona Rd.  
Suite 100  
Milan, MI 48160

P: 734-434-0477  
F: 734-434-6240

Katie Zdrada, MD

## Plymouth

990 W. Ann Arbor Trail  
Suite 302  
Plymouth, MI 48170

P: 734-434-0477  
F: 734-434-6240

Susanne Archer, MD  
Melissa A. Goedel, MD  
Norman Gove, MD  
Stephanie Menon, MD  
Alia Shah, MD  
Lauren Westerfield, MD, FACOG  
Abbey Alsip, CNP  
Catherine Riffle, PA-C ♦

Learn more,  
find a provider  
and schedule an  
appointment!



## Rochester Hills

1854 W. Auburn Road  
Suite 100B  
Rochester Hills, MI 48309

P: 248-696-3176  
F: 248-696-3177

Aabeen Hagroo, DO  
Julie Gordon Masters, DO  
Stacy Paye, DO  
Cara Smith, MD

## West Arbor

4350 Jackson Rd.  
Suite 300  
Ann Arbor, MI 48103

P: 734-995-2259  
F: 734-995-2418

Ashley Dowgiert, MD, FACOG  
Laura Downing, MD, FACOG  
G. Bridget Long, MD ♦  
Catriona Macardle, MD, FACOG  
Katharine Micallef, DO, FACOG  
Sara Muszynski, MD, FACOG  
Kim Palfey, MD ♦  
Joanne Vicari, MD, FACOG ♦  
Adam Ziff, DO ♦  
Megan Zeiher, CNP

## Westland

32932 Warren Rd.  
Suite 100  
Westland, MI 48185

P: 734-743-4500  
F: 734-743-4362

Chiquita Berg, MD, FACOG ♦  
Candice Gates, MD  
Michael M. Gatt, MD, FACOG ♦  
Monica Hill, MD, FACOG  
Timothy Johnson, MD, FACOG  
Brittley Leppien, DO  
Lauren Wichelmann, DO

♦ Gynecology only



## Nurse Midwives

### Domino's Farms

4200 Whitehall Dr., Suite 350  
Ann Arbor, MI 48105

**P:** 734-572-9600  
**F:** 734-572-0616

**Abeer Al-Mohammad, CNM**  
**Katie Bolling, CNM**  
**Jessica Braman, APRN, CNM**  
**Jacqui Clark, CNM**  
**Ashleigh Cornell, CNM, IBCLC**  
**Elaina Dean, CNM**  
**Danielle Douglas, CNM**  
**Nora Drummond, CNM**  
**Jessica Hoskins, CNM**  
**Jennifer Kelley, CNM**  
**Nicole Sekulich, CNM**  
**Amanda Varva, CNM**  
**Stephanie Yaldoo, CNM**  
**Suzanne Ziemke, CNM**

### Schoolcraft Campus

19000 St. Joe's Parkway, Suite 220  
Livonia, MI 48152

**P:** 734-884-5335  
**F:** 734-884-5336

**Jacqui Clark, CNM**  
**Sydney Constante, CNM**  
**Danielle Douglas, CNM**  
**Nora Drummond, CNM**  
**Katie Kern, CNM**  
**Nicole Sekulich, CNM**  
**Stephanie Yaldoo, CNM**

## Maternal-Fetal Medicine

### Arbor Park Park

4918 W. Clark Road, Suite 104  
Ypsilanti, MI 48197

### West Arbor

4350 Jackson Rd., Suite 310  
Ann Arbor, MI 48103

**P:** 734-528-9125  
**F:** 734-528-9263

**Pooja Green, MD, FICS**  
**Nayla Kazzi, MD**  
**Kristie Keeton, MD, MPH**  
**Jennifer A. Williams, MD, MHSA**  
**Deborah Squire, CNP**

### Oakland Campus

44555 Woodward Ave., Suite 404  
Pontiac, MI 48341

**P:** 248-858-6762  
**F:** 248-858-3761

**Adib Abdelrahman, DO**  
**Shauna Harris, MD**  
**Tatiana Harr, MPAS, PA-C**  
**Amanda Hirsch, CNP**  
**Molly Muir, CNM, CNP**



Learn about academic  
practices on page 18

## Trinity Health Perinatal Wellness Center & Breastfeeding Medicine

The Trinity Health Perinatal Wellness Center is a comprehensive practice caring for women during and after their pregnancies. Our International Board Certified Lactation Consultants (IBCLC) are board-certified providers or registered nurses who can provide you with expert care before, during and after your baby is born to ensure that you have the support and education you need to feel comfortable and confident in your decision to breastfeed. All lactation consultants provide breastfeeding support consistent with the recommendations of both the American Academy of Pediatrics, the International Board of Lactation Consultant Examiners and the Academy of Lactation Policy and Practice.

### Reichert Medical Center

5333 McAuley Dr., Ste. 2106, Ypsilanti, MI 48197

**P:** 734-213-3680 **F:** 734-213-3681

**Lisa A. Hammer, MD, IBCLC** **Kelly Strickler, CNP, IBCLC**  
**Kathryn Lankton, DO, IBCLC** **Nancy Dmitrichina, RN, IBCLC**  
**Emily Piniatoglou, CNP, IBCLC** **Beth Hoskins, LPN, IBCLC**

Lactation consultants are available for one-on-one breastfeeding assistance. They can handle many types of breastfeeding issues including, but not limited to:

- Basic breastfeeding education
- Support and encouragement
- Help continuing with breastfeeding after returning to work or school
- Latch-on problems
- Sore nipples or engorgement
- Slow weight gain of infant
- Insufficient breast milk
- Medical conditions such as prematurity, Down syndrome, cleft lip and/or palate
- Breastfeeding multiples

## Urogynecology and Reconstructive Pelvic Surgery

Urogynecology and Reconstructive Pelvic Surgery is a subspecialty of obstetrics and gynecology that focuses specifically on treating women with pelvic floor disorders, including pelvic organ prolapse, urinary or fecal incontinence, and overactive bladder. These disorders are treated through a combination of both surgical and non-surgical methods with the goal of enhancing the quality of life for affected women. Obstetrician/gynecologists undergo additional fellowship training in this subspecialty.

### Bloomfield

43097 Woodward Ave., Suite 202  
Bloomfield Twp., MI 48302  
**James Ross, MD, FACOG**

### Schoolcraft Campus

19000 St. Joe's Parkway, Suite 210  
Livonia, MI 48152  
**Paul Makela, MD, FACOG**

### West Arbor

4350 Jackson Rd., Suite 300  
Ann Arbor, MI 48103  
**Adam Ziff, DO**



Scan to learn more.

## OB Ultrasound

We have six locations for OB (obstetric) ultrasound. OB ultrasound is located within Maternal-Fetal Medicine Arbor Park, Oakland Campus and West Arbor, as well as Trinity Health Ann Arbor and Trinity Health Livonia. OB Ultrasound has an additional location in Obstetrics & Gynecology - Genoa. A specially trained person known as a registered diagnostic medical sonographer (RDMS) will perform the examination which will be reviewed by a physician trained in fetal imaging.



# Trinity Health IHA Medical Group

## PEDIATRICS

### Arbor Park

4936 W. Clark Rd., Suite 101  
Ypsilanti, MI 48197

**P:** 734-434-3000  
**F:** 734-434-8040

Erin Andrews, MD  
Karen Brenner, MD  
Nicole Frei, MD  
Jessica Lee, MD  
Casey Lwo, MD  
Jennifer McDonald, CNP  
Marla Mikelait, MD  
Kandice Schifko, MD  
Adriana Benedetto, CNP  
Marissa DaSilva, CNP, IBCLC  
Cindi Frederiksen, CNP  
Kelsey Gietzen, CNP  
Barbara Putman, CNP

### Chelsea

14288 E. Old US 12, Suite 100  
Chelsea, MI 48118

**P:** 734-475-9175  
**F:** 734-475-0120

John Gardner, MD  
C. Emily Heung, MD  
Tara Kelly, MD  
Susanna Lin, MD  
Gina South, MD  
Stephanie Tarnacki, MD

### Cherry Hill Village

49650 Cherry Hill Rd., Suite 210  
Canton, MI 48187

**P:** 734-398-7899  
**F:** 734-398-7895

Hira Amarasinghe, MD  
Nancy Anastasi, MD  
Crystal Barrow, MD  
Leah Buckley, MD  
Kerri Randall, MD  
Madhu Sennerikuppam, MD, MPH  
Lisa Sprague, MD  
Hayley Teich, MD  
Judy Tosto, MD  
C. Faith Victoria, MD  
Becca Wise, DO  
Kimberly Dunleavy, CNP  
Bryn Gerich, CNP  
Molly McIntyre, CNP  
Kerry Swanton, CNP

### Domino's Farms

4200 Whitehall Dr., Suite 230  
Ann Arbor, MI 48105

**P:** 734-769-3896  
**F:** 734-769-3746

Amy Cooke, MD  
Jessica Lee, MD  
Monica Montemayor, MD  
Christopher Smith, MD  
Lisa Whitehead, MD  
Frances Youssef, MD  
Aubree Blumer, CNP

### Farmington Hills

28300 Orchard Lake Rd., Suite 100A  
Farmington Hills, MI 48334

**P:** 248-855-7510  
**F:** 248-855-5626

Zachary Bauer, DO  
Sarah Clune, DO  
Amy Dunn, MD  
Aimee Pollak, MD  
Megan Tarhanich, CNP

### Genoa

2305 Genoa Business Park Dr.  
Suite 240  
Brighton, MI 48114

**P:** 810-494-6820  
**F:** 810-229-0747

Maria Bule, MD  
Maria DeLeon, DO, MPH  
Kirtana Ghandikota, MD  
Bethany Hall, MD  
Rebecca Korpai, DO  
Chris Kottke, MD  
Stacey O'Connor, DO  
Melissa Zarow, DO, ABOIM  
Julie Byrne, CNP, IBCLC  
Kristen Upton, CNP, IBCLC

### Plymouth

990 W. Ann Arbor Trail, Suite 210  
Plymouth, MI 48170

**P:** 734-455-4600  
**F:** 734-455-5637

Natalina Cwalina, MD  
Tarin Gitlin, MD  
Melissa Ayoub Heinen, DO, MPH  
Sarah Lacy, MD  
Jenna Millstead, MD  
Christine Stankovic, MD  
David Tobin, MD  
Nicole Dillon, CNP  
Kelly Roberts, CNP  
Shannon Schwartz, CNP  
Tara Valentine, CNP

### Schoolcraft Campus

19000 St. Joe's Parkway  
Suite 160  
Livonia, MI 48152

**P:** 734-884-5200  
**F:** 734-884-5201

Patrick Gordon, MD  
Melissa Ayoub Heinen, DO, MPH  
Michelle Kasprick, MD  
Jenna Millstead, MD  
Rachel Nash, MD, MPH, CLC  
David Tobin, MD  
Brook Nayak, CNP  
Paris Simono, CNP

### Union Lake

2630 Union Lake Rd., Suite 100  
Commerce Charter Twp., MI 48382

**P:** 248-360-1200  
**F:** 248-360-6182

Stacey Gorman, MD  
Geetha Nair, MD  
Courtney Palka, MD  
Morgan Parkinson, CNP

Learn more, find  
a pediatrician  
and schedule an  
appointment!



### West Arbor

4350 Jackson Rd., Suite 100  
Ann Arbor, MI 48103

**P:** 734-971-9344  
**F:** 734-971-2303

Alyson Bokshan, MD  
William Chamness, MD  
Carmen Green-Lee, MD  
Omkar Karthikeyan, MD  
Melissa Pike, MD  
Brittany Rabum, MD  
Wendy Roberts, MD  
Jamie Thompson, MD  
Matthew Waier, MD  
Eric Wheatley, MD  
Emma Adams, CNP, IBCLC  
Mary Dobbs, CNP  
Kelly Strickler, CNP, IBCLC





# What is Internal Medicine/Pediatrics?

With a focus on lifelong preventive health care and overall well-being, our internal medicine and pediatric physicians and staff specialize in primary care for infants, children and adults. Internal Medicine/Pediatrics, sometimes called Med-Peds, is the combination of Internal Medicine (primary care for adults) and Pediatrics (primary care for infants, children and adolescents). Physicians receive an additional year of training and are board-certified in both internal medicine and pediatrics.

**Arbor Park**  
Therese Benevich, MD

**Canton**  
Kimberly McCord, MD

**Howell**  
Bassel Atasi, MD  
Aaron Daniel, MD

**Lake Orion**  
Timothy Dickson, MD  
Amy McCarthy, MD  
Kathryn Rice, MD

**Neighborhood**  
Bassel Atasi, MD  
Corey Dean, MD, FAAP, FACP  
Suzette D. LaVigne, MD, MPH, FAAP  
Tomas Murphy, MD  
Sara Platte, MD, FAAP

**Pinckney**  
Michelle Carveth, MD

**Plymouth**  
Matthew Kohlenberg, MD  
Jeffrey Van Hooser, MD

**Rochester Hills**  
Walter Culver, MD

**Southeast Livonia**  
Shyran Hines-Fenderson, MD  
Rachel Marcucci, MD  
Erin Walton-Doyle, MD

**Waterford**  
Leslie Caren, MD

**West Arbor**  
Marie Arnaout, DO  
Hongyan (Grace) Yang, MD, PhD

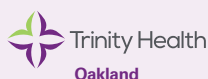
See pages 4, 5 & 6 for details.

## Pediatric Specialties in Oakland

**Oakland Medical Office Building**  
44555 Woodward Ave.  
Pontiac, MI 48341

P: 248-287-7500 F: 248-287-7501

A collaboration with our teams:



### Cardiology

Suite 105

Clinton Cochran, MD  
Daniel Turner, MD

Pediatric Cardiology is different from the way cardiologists treat adult patients. The structure of children's hearts is different and smaller than adults' heart structure. Pediatric cardiologists have special training and experience treating conditions that affect the structure or rhythm of children's hearts. Pediatric cardiologists work closely with your child's pediatrician. They don't do surgery.

### Gastroenterology

Suite 505

Shuemein Julia Mar, MD

This clinic offers diagnosis and treatment of a variety of gastrointestinal diseases including inflammatory bowel disease, celiac disease, eosinophilic esophagitis, irritable bowel syndrome, gastroesophageal reflux disease (GERD), constipation, functional abdominal pain and functional dyspepsia. We also offer diagnostic upper endoscopies and colonoscopies.

### Hematology Oncology

Suite 505

Jennifer Blase, MD, PhD  
Kelley Ellis, CNP

This clinic offers comprehensive care for pediatric cancers and blood disorders. Specifically, we offer both outpatient clinic appointments and infusion services for chemotherapy, blood products, and treatments for immune deficiencies.

### Ophthalmology

Suite 405

Christopher Gappy, MD

Our clinic offers primary care of common children's eye problems as well as comprehensive evaluations and follow-up for children with simple or complex eye and vision disorders. We provide short-term treatment of immediate problems, as well as long-term rehabilitative care and monitoring of visual development in children and adolescents.

### Orthopaedics

Suite 505

Kristina Sinacori Walick, MD  
Olivia Mears, PA

Our team provides full-service care to newborns through young adults. Children with a bone, muscle or joint issue deserve comprehensive treatment from experts who specialize in caring exclusively for children and their unique needs. We believe that a team-based approach to musculoskeletal health, where bone and joint specialists with different backgrounds work together, provides the optimal care for each individual patient.

### Surgery

Suite 505

Joseph Church, MD  
Ronald B. Hirsch, MD  
Erika A. Newman, MD  
George B. Mychaliska, MD  
Meghan Arnold, MD  
Samir Gadepalli, MD  
Erin E. Perrone, MD  
Robin Petroze, MD  
K. Elizabeth Speck, MD  
Arul S. Thirumoorathi, MD

Pediatric surgery is the diagnostic, operative, and postoperative surgical care for children with congenital and acquired anomalies and diseases, be they developmental, inflammatory, neoplastic or traumatic.

### Urology

Suite 105

Julian Wan, MD

Pediatric urologists offer evaluation, diagnosis and treatment for infants, children and adolescents with abnormalities involving the kidneys, ureters, bladder, urethra and the reproductive organs of children. From routine, simple procedures to rare and complex conditions, we offer innovative, evidence-based treatment and a unique level of support and resources for children and families.

# Trinity Health IHA Medical Group

# SURGERY

## Academic Surgery - Ann Arbor Campus

Reichert Medical Center  
5333 McAuley Dr., Suite 2115  
Ypsilanti, MI 48197

P: 734-712-3971  
F: 734-887-8941

David G. Heidt, MD, FACS

## Academic Surgery - Oakland Campus

Trinity Health Oakland Hospital  
44555 Woodward Ave., Suite 501  
Pontiac, MI 48341

P: 248-338-7171  
F: 248-858-3889

## Bariatric & General Surgery

### Livonia Campus

Marian Professional Building  
14555 Levan Rd., Suite 311  
Livonia, MI 48154

P: 734-655-2692  
F: 734-655-4218

### Livingston Campus

Trinity Health Livingston Hospital  
620 Byron Rd., Suite 1200  
Howell, MI 48843

P: 517-545-6011  
F: 810-844-7411

### Oakland Campus

Oakland Medical Office Building  
44555 Woodward Ave., Suite 501  
Pontiac, MI 48341

P: 248-858-3505  
F: 248-858-6505

### West Arbor

4350 Jackson Rd., Suite 350  
Ann Arbor, MI 48103

P: 517-545-6011  
F: 517-545-5122

Eric Davies, MD, FACS, FASMBs  
Mark Jonker, MD, FACS, FASMBs  
Jacob Roberts, DO, FACS, FASMBs  
Tallal Zeni, MD, FACS  
Meredith Chapel, CNP  
Natalie Crook, CNP  
Stephanie Borst, PA-C

## Breast Surgery

### Ann Arbor Campus

Ellen Thompson Women's Center  
5320 Elliott Dr., Suite 203  
Ypsilanti, MI 48197

P: 734-712-1700  
F: 734-887-8938

### Chelsea Campus

Chelsea Professional Office Building  
14650 E. Old US Highway 12  
Suite 303  
Chelsea, MI 48118

P: 734-712-1700  
F: 734-887-8938

### Clarkston

6770 Dixie Highway, Suite 202  
Clarkston, MI 48346

P: 248-338-7171  
F: 248-858-3889

### Genoa

2305 Genoa Business Park Dr.  
Suite 210  
Brighton, MI 48114

P: 734-712-1700  
F: 734-887-8938

### Livonia Campus

Marian Professional Building  
14555 Levan Rd., Suite 113  
Livonia, MI 48154

P: 734-712-1700  
F: 734-887-8938

### Oakland Campus

Oakland Medical Office Building  
44555 Woodward Ave., Suite 501  
Pontiac, MI 48341

P: 248-338-7171  
F: 248-858-3889

Tara M. Breslin, MD, FACS  
Amy M. Kirby, MD, FACS  
Beth C. Kimball, MD, FACS  
Amanda R. Kupstas, MD  
Marisa O'Neill, DO  
Jill Federer, CNP  
Emily Maine, PA-C  
Kelly Sakalian, CNP  
Cally Schwinn, CNP

## Cardiothoracic Surgery

### Ann Arbor Campus

Michigan Heart & Vascular Institute  
5325 Elliott Dr., Suite 102  
Ypsilanti, MI 48197

P: 734-712-5500  
F: 734-887-8944

### Livonia Campus

Marian Professional Building  
14555 Levan Rd., Suite 311  
Livonia, MI 48154

P: 248-858-3850  
F: 248-858-3833

### Oakland Campus

Oakland Medical Office Building  
44555 Woodward Ave., Suite 506  
Pontiac, MI 48341

P: 248-858-3850  
F: 248-858-3833

### Cardiac Surgery

Ajay Gupta, MD  
Robert Lyons, MD, FACS  
Andrew Pruitt, MD, FACS  
Erika Koerner, CNP

### Thoracic Surgery

Kumari N. Adams, MD, FACS  
Melanie A. Edwards, MD, FACS  
Hiroko Nakahama, MD

### Cardiac & Thoracic Surgery

Karsten Fliegner, MD  
Charles F. Schwartz, MD, FACS  
Marc Silver, MD

## Colon & Rectal Surgery

### Ann Arbor Campus

Trinity Health Ann Arbor Hospital  
5325 Elliott Dr., Suite 104  
Ypsilanti, MI 48197

P: 734-712-8150  
F: 734-887-8939

### Clarkston

6770 Dixie Highway, Suite 202  
Clarkston, MI 48346

P: 248-338-7171  
F: 248-858-3889

### Oakland Campus

Oakland Medical Office Building  
44555 Woodward Ave.  
Suite 501  
Pontiac, MI 48341

P: 248-338-7171  
F: 248-858-3889

### Schoolcraft Campus

19000 St. Joe's Parkway, Suite 320  
Livonia, MI 48152

P: 734-712-8150  
F: 734-887-8939

### West Arbor

4350 Jackson Rd., Suite 350  
Ann Arbor, MI 48103

P: 734-712-8150  
F: 734-887-8939

Melissa I. Chang, MD, FASCRS, FACS  
Robert K. Cleary, MD, FASCRS, FACS  
John C. Eggenberger, MD, FASCRS, FACS  
Monica James, MD  
Steven Lu, DO  
Amanda M. McClure, MD, FASCRS, FACS  
Beth-Ann Shanker, MD, FASCRS, FACS  
Stevie-Jay Stapler, MD  
Ashley D. Churchman (Plemens), CNP  
Kelsey McDonald, CNP  
Jennifer Richmond, PA-C

Learn more,  
find a provider  
and schedule an  
appointment!



## General Surgery

### Ann Arbor Campus

Trinity Health Ann Arbor Hospital  
5315 Elliott Dr., Suite 201  
Ypsilanti, MI 48197

P: 734-712-8150  
F: 734-887-8939

### Chelsea Campus

Chelsea Professional Office Building  
14650 E. Old US Highway 12  
Suite 303  
Chelsea, MI 48118

P: 734-475-4177  
F: 734-475-3520

### Clarkston

6770 Dixie Highway, Suite 202  
Clarkston, MI 48346

P: 248-338-7171  
F: 248-858-3889

### Genoa

2305 Genoa Business Park Dr.  
Suite 120  
Brighton, MI 48114

P: 810-494-6881  
F: 810-494-6882

### Livonia Campus

Marian Professional Building  
14555 Levan Rd., Suite 311  
Livonia, MI 48154

P: 734-655-2692  
F: 734-655-4218

### Oakland Campus

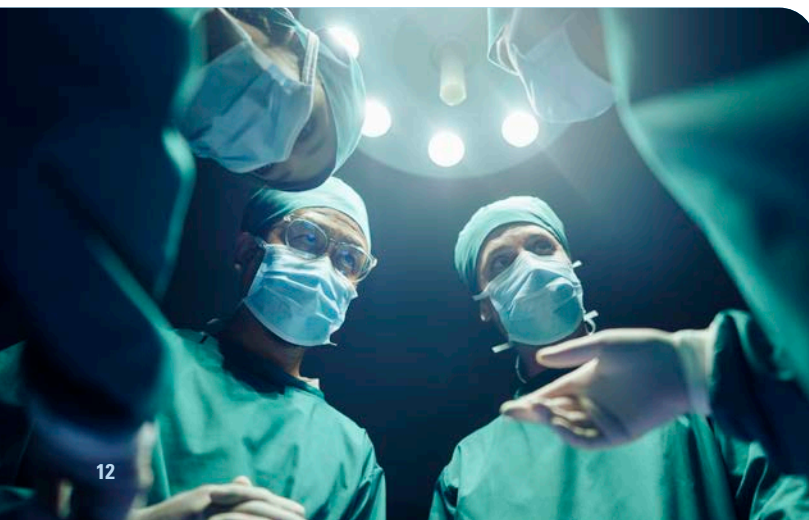
Oakland Medical Office Building  
44555 Woodward Ave., Suite 501  
Pontiac, MI 48341

P: 248-338-7171  
F: 248-858-3889

Anthony Bozaan, MD, FACS  
Amy Braddock, MD, FACS  
Justin Chamberlain, MD  
Eric Davies, MD, FACS, FASMBs  
David Diep, DO  
Christina L. Harsant, MD, FACS  
David G. Heidt, MD, FACS  
Mark Jonker, MD, FACS, FASMBs  
Alicia Kieninger, MD, FACS  
Beth C. Kimball, MD, FACS  
Edward D. Kreske, MD, FACS  
Jacob Roberts, DO, FACS, FASMBs  
Robert Robinson, MD, FACS  
Eileen Smith, MD  
Alicia Snider, MD  
Molly Whalen, MD  
Tallal Zeni, MD, FACS  
Rida Ali, PA-C  
Danielle Berthold, RNFA, CNP  
Meredith Chapel, CNP  
Abby Lawinger, PA-C



Learn about academic  
practices on page 18





## Hand Surgery

### Ann Arbor Campus

Michigan Orthopedic Center  
5315 Elliott Dr., Suite 202  
Ypsilanti, MI 48197

### Chelsea Campus

Chelsea Professional Office Building  
14650 E. Old US Highway 12, Suite 104  
Chelsea, MI 48118

### Genoa

Genoa Medical Center  
2305 Genoa Business Park Dr., Suite 120  
Brighton, MI 48114

### Schoolcraft Campus

19000 St. Joe's Parkway, Suite 400  
Livonia, MI 48152

### West Arbor

4350 Jackson Road, Suite 350  
Ann Arbor, MI 48103

P: 734-712-0600

F: 734-712-0522

Janelle Greene, MD

Fred M. Hankin, MD

John V. Hogikyan, MD

Shepard Peir Johnson, MD

Dennis S. Lee, MD

John Lien, MD

Erik O. White, MD

## Interventional Pain

### Chelsea Campus

14650 E. Old US Highway 12  
Suite 306  
Chelsea, MI 48118

P: 734-544-6955

F: 734-544-6956

Matthew Sleziak, DO

## Trauma Surgery

### Ann Arbor Campus

5333 McAuley Dr.  
Suite 2115  
Ypsilanti, MI 48197

P: 734-712-3971

F: 734-887-8941

### Livonia

Marian Professional Building  
14555 Levan Rd.  
Suite 311  
Livonia, MI 48154

P: 734-884-5024

F: 734-884-5025

### Oakland Campus

Oakland Medical Office Building  
44555 Woodward Ave.  
Suite 501  
Pontiac, MI 48341

P: 248-338-7171

F: 248-858-3889

Harry L. Anderson, III, MD, FACS

Amy Braddock, MD

William J. Curtiss, III, MD, FACS

Roy J. Golden, MD, FACS

L. Marco Hoesel, MD, FACS

Alicia Kieninger, MD

Joshua Payne, MD

Roger Ramcharan, MD

Robert Robinson, MD

Asha J. Shah, MD, FACS

Victoria L. Sharp, DO, FACOS

Anna Shu, DO

David Testrake, MD

Felicia Allen, CNP

Terry Allen, CNP

Jaclyn Anderson, PA-C

Kendall Braate, PA-C

Kristen Diez, CNP

## Orthopaedics

### Ann Arbor Campus

5315 Elliott Dr., Suites 301 & 304  
Ypsilanti, MI 48197

P: 866-ORTHO-IHA (866-678-4644)

F: 734-887-0652

### Canton

1600 S. Canton Center Rd., Suite 2200  
Canton, MI 48188

P: 866-ORTHO-IHA (866-678-4644)

F: 734-887-0652

### Chelsea Campus

14650 E. Old US Highway 12, Ste. 104  
Chelsea, MI 48118

P: 734-593-5700

F: 734-426-9024

### Genoa

2305 Genoa Business Park Dr., Ste. 120  
Brighton, MI 48114

P: 866-ORTHO-IHA (866-678-4644)

F: 810-844-7567

### Schoolcraft Campus

19000 St. Joe's Parkway, Suite 400  
Livonia, MI 48152

P: 866-ORTHO-IHA (866-678-4644)

F: 734-884-5220

### South Lyon

23200 Pontiac Trail  
South Lyon, MI 48178

P: 866-ORTHO-IHA (866-678-4644)

F: 810-844-7567

### West Arbor

4350 Jackson Rd., Suite 350  
Ann Arbor, MI 48103

P: 866-ORTHO-IHA (866-678-4644)

F: 734-887-0652

Kristopher J. Aalderink, MD, FAAOS

Neil Bakshi, MD

Creg Carpenter, MD

Michael G. Chrissos, MD

Stefan Garcia, MD

Timothy Gossett, MD

Mark Hake, MD

Victor N. Hakim, MD

Ben Harper, MD, FAAOS

Thomas M. Hearty, MD, DPT

S. Brandon Luczak, MD, FAAOS

Michael A. Masini, MD

Timothy J. McGlaston, MD

Ryan A. Mlynarek, MD

James E. Moravek, MD

Bryan J. Pack, MD, FAAOS

Aaron Perdue, MD

Mark Pinto, MD

Dexter Powell, MD

Manuel Schubert, MD

Dean R. Schueller, MD

Karl F. Schultz, MD

Jared R. Thomas, MD

Donald E. Wild, MD

Robert Williams, MD

Morgan Broekhuizen, PA-C

Kevin Caith, PA-C

Jessica Cicero, PA-C

Megan Doulette, PA-C

Morgan Dube, PA-C

Zach Feeman, PA-C

Matt N. Hodrosky, PA-C

Natalie Khoury, PA-C

Noah Lindhout, PA-C

Alexandra McKinney, PA-C

Alexandra Offerman, CNP

Kelsay Payton, PA-C

Carly Reising, PA-C

Carrie Rupe, PA-C

Scott Thompson, PA-C

Rebecca Turner, PA-C

Jana Zeigler, PA-C

## What is neurosurgery?

Trinity Health IHA Medical Group Brain & Spine Surgery is a team of neurosurgeons, orthopedic spine surgeons, and specialized advanced practice providers (physician assistants and nurse practitioners) with decades of collective experience. We use leading techniques to treat advanced brain, nerve and spine conditions. Our neurosurgeons are among some of the most trusted experts in the Midwest. We deliver comprehensive, compassionate care for nearly any diagnosis.

## Brain & Spine Surgery

### Ann Arbor Campus

Michigan Orthopedic Center  
5315 Elliott Dr., Suite 102  
Ypsilanti, MI 48197

P: 734-712-4500

F: 734-712-4475

### Brighton

Trinity Health Medical  
Center - Brighton  
7575 Grand River Ave., Suite 205  
Brighton, MI 48114

P: 734-712-4500

F: 734-712-4475

### Chelsea Campus

Chelsea Professional  
Office Building  
14650 E. Old US Highway 12, Suite 306  
Chelsea, MI 48118

P: 734-712-4500

F: 734-712-4475

### Clarkston

6770 Dixie Highway, Suite 202  
Clarkston, MI 48346

P: 248-858-3812

F: 248-858-3815

### Livonia Campus

Marian Professional Building  
14555 Levan Rd., Suite 202  
Livonia, MI 48154

P: 734-712-4500

F: 734-712-4475

### Oakland Campus

Oakland Medical Office Building  
44555 Woodward Ave., Suite 305  
Pontiac, MI 48341

P: 248-858-3812

F: 248-858-3815

### Rochester Hills

1854 W. Auburn Rd., Suite 100  
Rochester Hills, MI 48309

P: 248-858-3812

F: 248-858-3815

### West Arbor

4350 Jackson Road, Suite 350  
Ann Arbor, MI 48103

P: 734-712-4500

F: 734-712-4475

Jason Brodkey, MD, FACS, FIPP

Todd Francis, MD

Douglas Geiger, MD, MS, FACS

Ahmad Issawi, MD

Elyne Kahn, MD, MPH

Paul MacMahon, MD

Jay Nathan, MD

Lawrence Rapp, MD

Jayesh Thawani, MD

Brianne Barrett, CNP

Megan Dietrich, PA-C

Stefanija Galovska, PA-C

Kurt Hiester, MS, PA-C

Brandon Konschuh, CNP

Meaghan Littleton, MS, PA-C

Samuel Muench, MS, PA-C

Todd Y. Nida, MD, FACS

Johnathan Ogar, MS, PA-C

Rachel Opiela, PA-C

Megan Scholl, PA-C

## Podiatry

### Ann Arbor Campus

Reichert Medical Center  
5333 McAuley Dr., Suite 4012  
Ypsilanti, MI 48197

### Genoa

Genoa Medical Center  
2305 Genoa Business Park Drive  
Suite 120  
Brighton, MI 48114

### Plymouth

990 W. Ann Arbor Trail, Suite 102  
Plymouth, MI 48170

### Schoolcraft Campus

19000 St. Joe's Parkway, Suite 410  
Livonia, MI 48152

P: 734-572-1141

F: 734-572-1142

Ronald P. Adelman, DPM

Vanessa R. Adelman, DPM

Marc Bonanni, DPM

Stephanie J. Donovan, DPM

Gretchen L. Heutsche, DPM

Kalli Hewitt, DPM

Angela M. Ostroski, DPM

Oliver M. Ryan, DPM

Douglas Stoinski, DPM

Trevor McGowan, CNP

## Plastic & Reconstructive Surgery

### Arbor Park

Trinity Health Medical  
Center - Arbor Park  
4990 W. Clark Rd., Suite 100  
Ypsilanti, MI 48197

### Genoa

Genoa Medical Center  
2305 Genoa Business Park Dr.  
Suite 210  
Brighton, MI 48114

### Schoolcraft Campus

Trinity Health Medical  
Center - Schoolcraft Campus  
19000 St. Joe's Parkway, Suite 300  
Livonia, MI 48152

P: 810-494-6830

F: 810-494-6834

Daniel Lyons, MD

Farid Nossoni, DO

Thomas Olinger, MD

Sheena Lader, PA-C

Alysha Morrison, PA-C

Jessica Pantaleo, CNP

Sheila Putnam, PA-C

Mitchel Smith, PA-C

## Surgery (CONT.)

### Urology

#### Ann Arbor Campus

Reichert Medical Center  
5333 McAuley Dr., Suite 3001  
Ypsilanti, MI 48197

#### Genoa

Genoa Medical Center  
2305 Genoa Business Park Dr.  
Suite 210  
Brighton, MI 48114

#### Schoolcraft Campus

Trinity Health Medical Center -  
Schoolcraft Campus  
19000 St. Joe's Parkway, Suite 320  
Livonia, MI 48152

#### West Arbor

Trinity Health Medical  
Center - West Arbor  
4350 Jackson Rd., Suite 350  
Ann Arbor, MI 48103

P: 734-712-8100

F: 734-887-8942

Amy Brode, DO  
Kassem Faraj, MD  
Daniel Flewelling, MD  
Elena Gimenez, MD  
Marybeth Hall, MD  
Eduardo Kleer, MD  
Jeremy Konheim, MD  
Jennifer Kuo, MD  
Andrew Schwinn, DO  
Kashif Siddiqi, MD  
Deirdre Sherwood, PA-C  
Constance Sanocki, CNP  
Sarah Tehranisa, CNP

### Vascular & Endovascular Surgery

#### Ann Arbor Campus

Michigan Heart &  
Vascular Institute  
5325 Elliott Dr., Suite 101  
Ypsilanti, MI 48197

#### Brighton

Trinity Health Medical  
Center - Brighton  
7575 Grand River Ave., Suite 205  
Brighton, MI 48114

P: 734-712-8272

F: 734-887-8945

Melissa Day, MD  
Michael J. Heidenreich, MD, FACS  
John Kanitra, MD  
Chinmaya S. Shelgikar, MD  
Hue C. Thai, MD, FACS  
Andrea Hudak, PA-C

### In the Hospital Hospital Medicine

P: 877-336-6307

F: 734-887-8978

### Neonatology

P: 877-336-6307

F: 734-887-8979

### Pediatric Hospital Medicine

P: 877-336-6307

F: 734-887-8979

## Trinity Health IHA Medical Group SPECIALTIES

### Academic Cardiology - Pontiac

Woodward Professional Building  
44428 Woodward Ave., Suite 102  
Pontiac, MI 48341

P: 248-230-9161

F: 248-230-9163

Stacey Loree, DO

### Academic Dermatology Ann Arbor Campus

Reichert Medical Center  
5333 McAuley Dr., Suite 5003  
Ypsilanti, MI 48197

P: 734-712-3376

F: 734-887-8943

Marsha Henderson, MD  
Thomas Hester, MD  
Barry Auster, MD

### Academic Gastrointestinal - Ann Arbor Campus

Reichert Medical Center  
5333 McAuley Dr., Suite 2115  
Ypsilanti, MI 48197

P: 734-712-8115

F: 734-887-8941

Mohannad Abousaleh, MD  
Michael Fine, MD

### Dermatologic Surgery

Trinity Health Medical  
Center - Arbor Park  
4990 W. Clark Rd., Suite 200  
Ypsilanti, MI 48197

P: 734-572-7500

F: 734-572-7777

Montgomery Gillard, MD, FAAD, FACMS

### Recovery Medicine

#### Ann Arbor Campus

5333 McAuley Dr., Suite 5011  
Ypsilanti, MI 48197

#### Livonia Hospital

14555 Levan Rd., Suite 116  
Livonia, MI 48154

#### Oakland Campus

44428 Woodward Ave., Suite 102  
Pontiac, MI 48341

P: 734-712-8700

F: 734-622-5017

Carl Christensen, MD  
Mira Grace, MD  
John A. Hopper, MD, DFASAM  
Jaclyn Randel, MD, FASAM  
Aaron Rivkin, MD  
Lorien Shack, MD  
Brendan Sullivan, DO  
Mark A. Weiner, MD, DFASAM  
Michael Francis, PA-C

### Endocrinology

#### Arbor Park

4990 West Clark Rd., Suite 300  
Ypsilanti, MI 48197

#### Rochester Hills

1854 W. Auburn Rd, Suite 100B  
Rochester Hills, MI 48309

#### Schoolcraft Campus

Trinity Health Medical  
Center - Schoolcraft Campus  
19000 St. Joe's Parkway, Suite 300  
Livonia, MI 48152

P: 734-884-5196

F: 734-884-5197

JaneFrances Chukwu, MD  
Sruthi Jinna, MD  
FNU Manas, MD  
Mohammad Talha Rauf, MD  
Durga K. Yerasuri, MD  
Danmar Domingo, CNP

### Gynecologic Oncology

#### Ann Arbor Campus

Trinity Health Cancer  
Center - Ann Arbor  
5303 Elliott Dr., Suite 220  
Ypsilanti, MI 48197

#### Livonia Campus

Marian Professional Building  
14555 Levan Rd., Suite 113  
Livonia, MI 48154

P: 734-712-2005

F: 734-712-2013

Angela Kueck, MD  
J. Rebecca Liu, MD  
Kevin McCool, MD, PhD  
Heather Wahl, MD  
Kristina Benford, CNP  
Samantha Damren, CNP  
Alyssa Sanders Rios, PA-C

### Pathology & Laboratory Management

Lab Administration Department  
5301 East Huron River Dr.  
Ypsilanti, MI 48197

P: 734-712-3161

F: 734-712-2244

Sharon Bihlmeyer, MD  
Michael DeWall, DO •  
Ellen East, MD  
Diane Hall, MD  
Taher Reza Kermanshahi, MD  
Martin Magers, MD  
Amelia Manley, MD  
Stephen Olsen, MD •  
John Sherbeck, MD  
Joseph Tworek, MD  
Timothy VandenBoom, MD •  
Matthew Wasco, MD

• Dermatopathologist

Learn more,  
find a provider  
and schedule an  
appointment!



### Hematology Oncology

#### Ann Arbor Campus

Trinity Health Cancer  
Center - Ann Arbor  
5303 Elliott Dr., Suite 210  
Ypsilanti, MI 48197

#### Brighton

7575 Grand River Ave.  
Brighton, MI 48114

#### Canton

1600 S. Canton Center Rd.  
Canton, MI 48188

#### Chelsea Hospital

775 S. Main St.  
Chelsea, MI 48118

#### Livonia Hospital

14555 Levan Rd., Suite 112  
Livonia, MI 48154

P: 734-712-1000

F: 734-712-1012

#### Oakland Campus

Trinity Health Oakland Campus  
Alice Gustafson Center  
44405 Woodward Ave., Suite 202  
Pontiac, MI 48341

P: 248-858-2270

F: 248-335-6171

Abeer Alfaraj, MD  
Rami Arabo, MD  
Ibrahim Azar, MD  
Julia Bachler, MD  
Tareq Al Baghdadi, MD  
Kathleen W. Beekman, MD  
Michael Bekkerman, DO  
Carolyn Carrera, MD  
Erik J. Carson, MD  
Elie G. Dib, MD, MS, FACP  
Li Ding, MD  
Houssam Hariri, MD  
Stephanie J. Hoffman, MD  
Niklas J. Mackler, MD  
Kimberly A. Morley, MD  
Thomas Regenbogen, MD  
Christopher M. Reynolds, MD  
Justin Shaya, MD  
Radhika Takiar, MD  
Jerome D. Winegarden, MD  
Sri Bharathi Yadlapalli, MD  
Mohammad Aun Afzal, CNP  
Anne Courtney, CNP  
Amy D'Aprile, PA-C  
Heather Decker, PA-C  
Madeline Erdman, PA-C  
Riam Jamil, CNP  
Suzanne Jermstad, CNP  
Judith Krause, CNP  
Krystal Lopez, PA-C  
Jennifer McArdle, PA-C  
Devon Murphy, PA-C  
Tracy Romain, CNP  
Serena Tran, CNP  
Kari Ungar, CNP  
Owen Wood, PA-C





Learn about academic practices on page 18

## Neurology

### Ann Arbor Campus

5333 McAuley Dr., Suite 6109  
Ypsilanti, MI 48197

### Livingston Campus

820 Byron Rd., Suite 200  
Howell, MI 48843

### Livonia Hospital

14555 Levan Rd., Suite 116  
Livonia, MI 48154

P: 734-712-1400

F: 734-623-2857

### Oakland Campus

44555 Woodward Ave., Suite 104  
Pontiac, MI 48341

P: 248-858-6104

F: 248-858-6115

Tamer Abdelhak, MD   
Owais Alsrouji, MD   
Anastasios Alexiou, MD  
Andrew Biondo, DO, FAAN  
Charles Braun, MD  
Jamal Chirri, DO   
Cody Ciaramitaro, MD  
Nicole David, DO   
Michelle Dismundy, DO   
Theron Dobson, MD  
Catalina Filip, MD  
Jeffrey Fletcher, MD   
Omran Kaskar, DO  
Rachel Kraft, DO  
Sohaib Lateef, MD  
Deepa Malaiyandi, MD   
Amin Marji, MD  
Hassan Aboul Nour, MD   
Mohamad Orabi, MD   
Shabnam Pakneshan, DO  
Amy Pappas, DO  
Amanda J. Rabquer, MD  
Martha H. Reincke, MD  
Matthew Rumschlag, MD  
Andrea Stoner, DO  
Dionne Swor, DO   
Emily Westbury, MD  
Brian Wideman, DO  
Elizabeth Adeniyi-Kassim, PA-C   
Sarah Allmacher, PA-C   
Emma Amann, CNP   
James Atkinson, PA-C   
Jasmine Bingham, CNP   
Alexa Calas, PA-C  
Jisha Dudeesh, CNP   
Deborah George, CNP   
Adam Ihrig, PA-C   
Kristin Koss, CNP   
Nancy Michael, CNP   
Petrica Molnar, CNP   
Amy Nilaj, PA-C   
Kimberly Playfoot, PA-C  
Lauren Rawie, CNP  
Christina Schaublin, PA-C   
Jason Schwartz, CNP  
Lara Shwayhat, PA-C   
Radhika Sokhal, CNP   
Lauren Sumerix, PA-C   
Rachel Struck, PA-C   
Mary Kate Szuma, PA-C   
Ellie Walker, PA-C  
Chase Wight, PA-C

Inpatient only neurohospitalist

NeuroIntensivist

Neuro Intervention

## Pulmonary, Critical Care & Sleep Medicine

### Ann Arbor Campus

Reichert Medical Center  
5333 McAuley Dr., Suite 3111  
Ypsilanti, MI 48197

### Chelsea Campus

Chelsea Professional  
Office Building  
14650 E. Old US Highway 12  
Suite 302  
Chelsea, MI 48118

### Livingston Campus

Trinity Health Livingston  
McPherson Professional Building  
820 Byron Rd., Suite 200  
Howell, MI 48843

### Livonia Hospital

Trinity Health Livonia  
14555 Levan Rd., Suite 116  
Livonia, MI 48154

P: 734-712-7688

F: 734-712-7056

Mohammed Al-Charakh, MD  
Urvashi Bhan, MD  
Christine L. Curran, MD  
Bruno DiGiovine, MD  
Sohaib Gilani, MD  
Thomas R. Gravelyn, MD, FCCP, FACP\*  
Colin Holtze, MD  
Narendra Khanchandani, MD   
Arwa A. Mohamed Hosni, MD\*  
Parvathy S. Nair, MD\*  
Syed Razvi, MD  
Mohammad Sakbani, MD\*  
Robyn Scatena, MD  
Gregory S. Stone, MD, FCCP, FACP  
Rajeev Swarup, MD  
Bing Xue, MD  
Matthew J. Clark, PA-C  
Kathleen M. Kerr, PA-C  
Morgan Murdock, CNP  
Rachel Palmer, PA-C  
Cory Ryan, PA-C  
Ashley Zietlow, PA-C

\* Board-certified Sleep Medicine Specialist

Inpatient only

Critical care only

## Rheumatology

### Chelsea

Trinity Health Medical  
Center – Chelsea  
14288 E. Old US 12, Suite 200  
Chelsea, MI 48118

### Genoa

Genoa Medical Center  
2305 Genoa Business Park Dr.  
Suite 200  
Brighton, MI 48114

### Rochester Hills

1886 W. Auburn Road, Suite 300  
Rochester Hills, MI 48309

### West Arbor

Trinity Health Medical  
Center - West Arbor  
4350 Jackson Rd., Suite 320  
Ann Arbor, MI 48103

P: 734-426-1931

F: 734-426-9021

Khashayar Ahmadmehrabi, MD  
Yue Ding, MD  
Weixia Guo, MD  
Fazleomar Mahmood, MD  
April Marquardt, OD, MD  
Jasmine Stannard, MD  
Eric Wise, MD  
Amber Nicole Young, MD

## Michigan Heart

### Ann Arbor Campus

Michigan Heart & Vascular Institute  
5325 Elliott Dr., Second Floor  
Ypsilanti, MI 48197

P: 734-712-8000

F: 734-712-8010

### Brighton

Trinity Health Medical Center - Brighton  
7575 Grand River Ave., Suite 206  
Brighton, MI 48114

P: 810-844-7750

F: 810-844-7751

### Canton

Trinity Health Medical Center - Canton  
1600 S. Canton Center Rd., Suite 345  
Canton, MI 48188

P: 734-398-7515

F: 734-844-8742

### Chelsea Campus

Chelsea Professional  
Office Building  
14650 E. Old US Highway 12  
Suite 204  
Chelsea, MI 48118

P: 734-712-8000

F: 734-433-4516

### Livonia Hospital

Trinity Health Livonia  
14555 Levan Rd., Suite 203  
Livonia, MI 48154

P: 734-462-3233

F: 734-853-1507

Carmel Ashur, MD  
Laurie Bossory, MD  
Francisco Medrano Corado, MD  
Richard Ferraro, MD  
Steven E. Girard, MD, PhD  
Xu Gao, MD  
Tauqir Y. Goraya, MD, PhD  
Radmira S. Greenstein, MD  
Jihn D. Han, MD  
Kate Holtze, MD  
Andrew Hughey, MD  
Mohammad-Ali Jazayeri, MD  
Sara Kamib, MD  
Jodie Kenes, MD  
Marlo F. Leonen, MD  
Benjamin D. McCallister Jr., MD  
Roy H. Misirliyan, MD  
Ahmad Mizyed, MD  
Paul Nona, MD  
Mansoor A. Qureshi, MD  
Suraj Raheja, MD  
Shilpa Reddy, MD  
Cyril Ruwende, MD, PhD  
Zakir H. Sahul, MD  
Ashraf Saleh, MD  
Robert L. Steele, MD  
David Sutter, MD  
Tanmay Swadia, MD  
Javier Valle, MD  
James E. Wilks, MD  
Susan Armstrong, CNP  
Clai Catto, PA-C  
Zachary Chirdon, PA-C  
Galen Engel, CNP  
Thomas J. Forton, CNP  
Catherine Giles, CNP  
Thais Hall, CNP  
Danielle Hudson, CNP  
Jennifer Kemps, PA-C  
Amy L. List, PA-C  
Anahit Movsesyan, PA-C  
Nidhi Patel, CNP  
Monica Scarffe, CNP  
Daniel Shonnard, PA-C  
Madison Winkler, PA-C  
Mary Zhen, PA-C

## Palliative Care

### Ann Arbor

5303 Elliott Dr., Suite 220  
Ypsilanti, MI, 48197

### Brighton

7575 Grand River Ave.  
Brighton, MI 48114

P: 734-712-7255

F: 734-327-1162

Meredith Austin, DO  
Alexandra Chis, MD  
Jessica Corcoran, MD  
Joseph Dixon, MD  
Linsey Gilbert, DO  
Nicholas Gregory, DO  
Brenda Herrera-Reed, MD  
Kristen Palomba, MD  
Salas Sabnis, MD  
Hiba Samaha, MD  
Amy Vandenberg, MD  
Dana Berry-Richardson, CNP  
Laurine Catalano, CNP  
Amanda Chmielewski, CNP  
Alyssa Kava, DNP  
Mary Beth Maes, CNP  
Donya Mayel, CNP  
Megan Patin, CNP  
Erin Prentice, CNP  
Jordan Richter, DNP  
Nancy Riggs, CNP  
Naheda Thabata, CNP

## Infectious Diseases

### Ann Arbor Campus

Reichert Medical Center  
5333 McAuley Dr., Suite 5011  
Ypsilanti, MI 48197

P: 734-712-8600

F: 734-327-1160

Syed Ahmad, MD  
Sarah Cookinham, MD  
Anna Dobosz, MD  
Drew Engers, MD  
Neelay Kothari, MD, MPH  
Anurag Malani, MD  
Holly Murphy, MD  
Nathaniel Soper, MD  
Swetha Srialluri, MD  
Erin Moser, PA-C

## Trinity Health Sleep Disorders Centers

Trinity Health Ann Arbor Hospital  
5305 Elliott Dr.  
Third Floor  
Ypsilanti, MI 48197

P: 734-712-2276

F: 734-712-2967

Trinity Health Livingston Hospital  
620 Byron Rd.  
Howell, MI 48843

P: 517-545-6690

F: 517-545-6692

# Mental Health, Behavioral Health and Substance Use Services

## Contact Us in Crisis

If you or someone you know is facing a mental health crisis, please call **988** or text “home” to **741741** to access the Michigan Suicide and Crisis Lifeline.



## Your Path to Healing

Are mental or behavioral health challenges holding you back? Are substance use issues interfering with your life? You are not alone, and the path to recovery starts at **Trinity Health IHA Medical Group**. Our dedicated team offers both **outpatient and inpatient care** in a supportive, nonjudgmental environment tailored to your needs.

## Services Offered

### Anxiety & Depression Help Via Our Collaborative Care Model

Collaborative Care is a type of Behavioral Health care that is embedded within your physician's office. Services include:

- A treatment team that includes you, your physician, a Behavioral Health Specialist and a consulting psychiatrist.
- A short-term, targeted treatment plan to help with managing symptoms related to anxiety or depression.
- Regular contact with your assigned Behavioral Health Specialist to talk about how you're doing, provide tools and help you achieve your goals.

### Outpatient Mental Health Services

Our outpatient programs offer support for children, adults, and families dealing with various mental health challenges, including but not limited to:

- Anxiety
- Depression
- Mood disorders
- Schizophrenia
- Bipolar Disorder

We provide:

- Psychiatry
- Counseling
- Individual and group therapy
- Psychological testing

### Partial Hospitalization Programs (PHP)

Designed for those needing intensive therapy without full hospitalization, PHP supports:

- Adolescents (12+) and Adults (18+)
- Patients with severe mental health concerns who need daily structured care
- The program is 6 hours a day, 5 days a week, with individual, group and family therapy, as well as psychiatry services and medication management

### Intensive Outpatient Programs (IOP)

Targeted for Adolescents (12+) and Adults (18+) who manage daily responsibilities but need additional support, the IOP includes:

- Group, individual, and family therapy
- Flexible sessions for developing coping strategies
- Psychiatry services and medication management
- The program is 3 hours a day, 3 days a week

### Addiction Recovery Services

We offer comprehensive recovery services for individuals facing challenges related to:

- Alcohol
- Opioids
- Prescription drugs
- Other substances
- The program offers intensive outpatient group and individual therapy
- Medication management related to addiction counter measures

## How to Get Started with Behavioral Health Services

- **Talk to Your Primary Care Provider:** Begin your journey by discussing your needs with your PCP, who can help direct you to appropriate services.
- **Explore Our Locations:** Trinity Health IHA Medical Group has facilities across Southeast Michigan, ready to assist you.

## Expect Personalized Care

At Trinity Health IHA Medical Group, we pride ourselves on providing:

- Evidence-based treatments
- A compassionate, experienced team
- Coordinated care and support for ongoing recovery

**Whether you need immediate assistance or are looking for long-term care, our doors are open, and we're here to guide you every step of the way. Reach out today to begin your journey toward mental wellness.**





## Child and Adolescent Therapy and Counseling:

- Trinity Health Academic Psychiatry & Counseling - Schoolcraft Campus
- Trinity Health IHA Medical Group, Psychiatry & Counseling - Ann Arbor Campus
- Chelsea Hospital Behavioral Health - Clocktower Commons

## Psychiatry Physician and APP:

- Trinity Health IHA Medical Group, Psychiatry & Counseling - Ann Arbor Campus
- Chelsea Hospital Behavioral Health - Clocktower Commons

## Partial Hospitalization:

- Trinity Health Adolescent Partial Hospitalization Program - Ann Arbor Campus

## Intensive Outpatient Program:

- Trinity Health Adolescent Partial Intensive Outpatient Program - Livingston Campus



## Geriatric

### Therapy, Counseling:

- Trinity Health Academic Psychiatry & Counseling - Schoolcraft Campus
- Trinity Health IHA Medical Group, Psychiatry & Counseling - Ann Arbor Campus
- Chelsea Hospital Behavioral Health - Clocktower Commons

### Psychiatry:

- Chelsea Hospital Behavioral Health - Clocktower Commons



## Adult

### Therapy, Counseling and Psychiatry:

- Trinity Health Academic Psychiatry & Counseling - Schoolcraft Campus
- Trinity Health IHA Medical Group, Psychiatry & Counseling - Ann Arbor Campus
- Chelsea Hospital Behavioral Health - Clocktower Commons
- Trinity Health IHA Medical Group, Psychiatry & Counseling - Genoa Campus
- Trinity Health IHA Medical Group, Psychiatry & Counseling - Canton

### Partial Hospitalization:

- Trinity Health Adult Partial Hospitalization Program - Ann Arbor Campus

### Intensive Outpatient Program:

- Trinity Health Adult Intensive Outpatient Program - Ann Arbor Campus
- Trinity Health Adult Intensive Outpatient Program - Chelsea Campus

### Substance Use Disorder:

- Trinity Health Addiction Recovery - Ann Arbor Campus

### Inpatient Hospitalization:

- Trinity Health Inpatient Behavioral Health - Ann Arbor Hospital
- Trinity Health Inpatient Behavioral Health - Livonia Hospital
- Trinity Health Inpatient Behavioral Health - Oakland Hospital

### Electroconvulsive Therapy (ECT):

- Trinity Health Inpatient Behavioral Health - Ann Arbor Hospital
- Trinity Health Inpatient Behavioral Health - Livonia Hospital

## Trinity Health IHA Medical Group

# Psychiatry & Counseling

## Academic Psychiatry & Counseling

Trinity Health Medical Center - Schoolcraft Campus  
19000 St. Joe's Parkway  
Suite 310  
Livonia, MI 48152

## Ann Arbor Campus

Huron Oaks  
5401 McAuley Drive  
Ypsilanti, MI 48197

## Canton

1600 S. Canton Center Rd.  
Suite 210  
Canton, MI 48188

## Chelsea Hospital Behavioral Health - Clocktower Commons

Clocktower Commons  
350 North Main Street  
Suite 150  
Chelsea, MI 48118

## Genoa

Cross Pointe Center  
2300 Genoa Business Park Dr.  
Suite 180  
Brighton, MI 48114

P: 800-777-3166

F: 800-279-1076

Ayah Anani, DO  
Jeremy Baruch, MD  
Renee Bayer, MD  
Elizabeth Block, MD  
Shelby Jocoy, DO  
Taymaz Joneydian, MD  
Joseph Kamel, DO  
Natalie Lares, DO  
Nicholas Morcos, MD  
Fatin Nahi, MD  
Anastazia Novatchinski, MD

Frank Pavlovic, DO  
Aaron Robins, MD  
Kaitlyn Ryan, MD  
Andrew Silva, MD  
Pamela Sohoni, MD  
Andrew Van Pay, MD  
Oula Chehab, PA-C  
Brianna Krueger, CNP  
Lauren Abramowicz, LMSW  
Alexandria Betke, LMSW  
Marit Bucknam, LMSW  
Amber Bussell, LMSW  
Stuart Chalin, LMSW  
Priscilla Cortez, LMSW  
Melissa Doletzky, LMSW  
Kelly Frederick-Castro, LMSW  
Gwenyth Hayes, LMSW  
Debra Houde, MA, LLP  
Gillian Jackson, LMSW  
Michelle James-Mann, LMSW  
Angela Jude, LMSW  
Maggie Kantola, LMSW  
Margaret Kelly, LMSW  
Miriam Kirscht, LMSW  
Adrianne Lee, LLP  
Mary Lewis, LMSW  
Joel Maier, LMSW  
Stephanie Mathews, LMSW  
Barbra Mazie, LMSW  
Kayla McMaster, LMSW  
Joshua Mietleski, LMSW  
Liliya Mironova, LMSW  
Marshall Moore, LMSW  
Jonathan A. Mullinix, LMSW  
William Nichols, LMSW  
Virginia Oemke, LMSW  
Christine O'Keefe, LPC  
Meredith Perry, LMSW  
Collin Petz, LMSW  
Katherine Potts, LMSW  
Brittany Sanders, LMSW  
Constance Schuby, LMSW, CAADC  
Elizabeth Sensing, LMSW  
Garrett Shotwell, LMSW  
Brittany Shupe-Sawyer, LMSW  
Eric Smith, LMSW  
Michael Sotiropoulos, LMSW  
Jasmine Steele, LMSW  
Suzanne Suleiman, MS, LLP  
Meghan Thiel, LMSW  
Jean Timlin, LMSW  
Mariana Voica, LMSW  
Angela Welton, LMSW  
Jacqueline White, LPC  
Polly Zhang, LMSW

## Trinity Health

# Addiction Recovery

## Ann Arbor Campus

Huron Oaks  
5401 McAuley Drive  
Ypsilanti, MI 48197

P: 734-786-2300

Sarah Bur, MD  
Amanda Campbell, LMSW, CAADC  
Tracy Irons, LMSW, CAADC  
Jakalyn Jarois, LMSW  
Ryan Vannatter, BSW, CADC-DP



## What is Care Management?

At Trinity Health IHA Medical Group, Care Management works with patients who have moderate to complex illnesses. Located in your primary care practice, the care manager works in collaboration with your primary care physician and medical team to improve your overall health. The care manager works with you to assess and proactively manage your health, helping you to identify areas that you would like to improve or better manage.

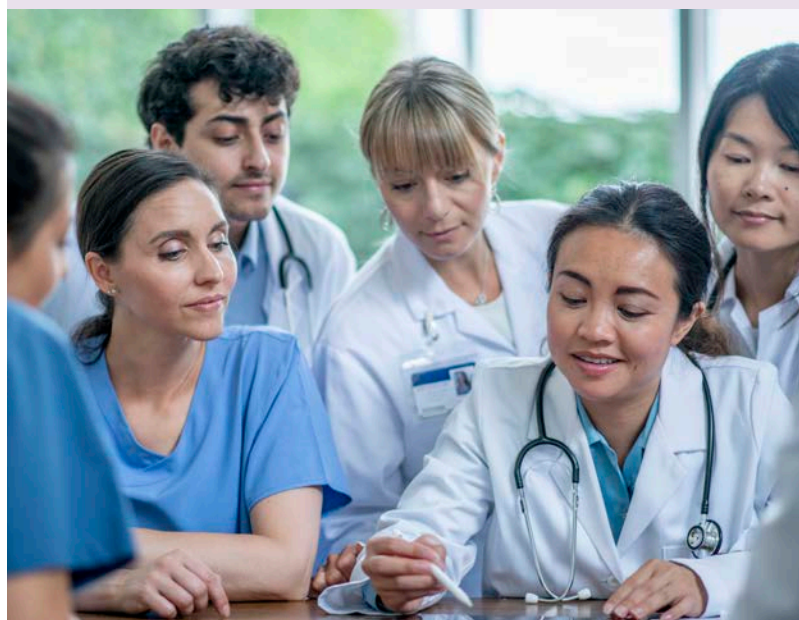
## Nutrition Services

Our nutrition specialists offer nutrition counseling services at many locations. Their expertise can provide you with the necessary knowledge to achieve all of your individual and family dietary needs.

- One-on-one nutrition counseling
- Easy to follow, customized eating plans to achieve/maintain a healthy weight
- Prevention/management of chronic disease through dietary and lifestyle changes
- Weight management programs
- Guidance in managing nutrition science to form healthy habits that will help you look and feel better
- A healing approach to treating diagnosed medical conditions and their associated symptoms

## Trinity Health Academic Practices

Our team of faculty and resident physicians provide the most up-to-date, evidence-based medical care in a caring, compassionate environment. Working closely with each of our patients, we develop personalized care plans with a special emphasis on preventive care so that, in addition to helping you with health concerns, we can work with you to avoid ones that may come up in the future.



## Stay Connected to Your Health with MyChart

Trinity Health MyChart gives you online access to your medical record. View test results, message your doctor, schedule your next appointment and review medical information from anywhere.



### Manage Your Appointments

Schedule your next appointment or view details of your past and upcoming appointments.



### Online Visits

See a health care provider without having to go into the clinic.



### Access Your Test Results

No more waiting for a phone call or letter. View your results and your doctor's comments within days.



### Communicate with Your Doctor

Get answers to medical questions without phone calls or unnecessary appointments.



### Pay Bills Online

Access and pay your copays and bills from anywhere.



### Request Prescription Refills

Send a request for any of your refillable medications.

To sign up or access your MyChart Account, visit [MyChartTrinityHealthMi.org](https://MyChartTrinityHealthMi.org).



# Before you rush to the ER, Call your Primary Care Office or 844-IHA-DOCS first!

You can call us 24 hours a day, 7 days a week!

Speak to a nurse to evaluate your symptoms and determine the best place for you to be seen. If your need is after regular business hours, our phones automatically connect to the IHA Call Center where IHA nurses are ready to assist you. We also have a doctor on-call for questions the nurse may not be able to help with. Picking the right option can save you time, money and hassle. Here are some common examples of complaints appropriate for your Primary Care Office, Urgent Care or the Emergency Room:



## PRIMARY CARE

**For care and treatment of routine or immediate needs that are not life-threatening**

*For all medical concerns contact your primary care provider first. Your primary care provider is the most familiar with your medical history and provides routine or immediate care when it is not an emergency*



Allergies



Animal or Insect Bite



Asthma



Back Pain



Cold & Flu Symptoms



Diabetes



Ear Pain



Gastrointestinal or Stomach issues



Headaches



High Blood Pressure



Immunizations or Shots



Pink Eye



Preventive Care



Rashes



Routine Well Visits



Sore Throat/Cough



Urinary Tract Infection



Women's Health



## URGENT CARE

**For immediate but not life-threatening needs, when your Primary Care provider is unavailable**

*Call your Primary Care Office first if you believe you should go to an Urgent Care. Urgent care has evening and weekend hours when your primary care provider may not be available.*



Allergic Reaction



Animal or Insect Bite



Asthma Attack



Back Pain



Broken Bones



Cold and Flu Symptoms



Ear Pain



Minor Head Injuries



Pink Eye



Rashes



Sore Throat/Cough



Sprains and Strains



Stitches



Moderate Stomach Pain



Tooth Pain



Urinary Tract Infection



## EMERGENCY ROOM

**For any life or death emergency or urgent after-hours needs  
OPEN 24/7**

*Call your Primary Care Office first if you believe you should go to the Emergency Room. You should follow up with your primary care provider after a visit to an emergency room.*



Severe Asthma Attack



Severe Broken Bones



Severe Burns



Severe Chest Pain



Convulsions or Seizures



Drug Overdose or Poisoning



Bad Falls (Seniors)



High Fever



Fever in Newborn (under 2 months of age)



Severe Head, Neck or Back Injury



Loss of Consciousness



Rapid Bleeding



Severe Stomach Pain



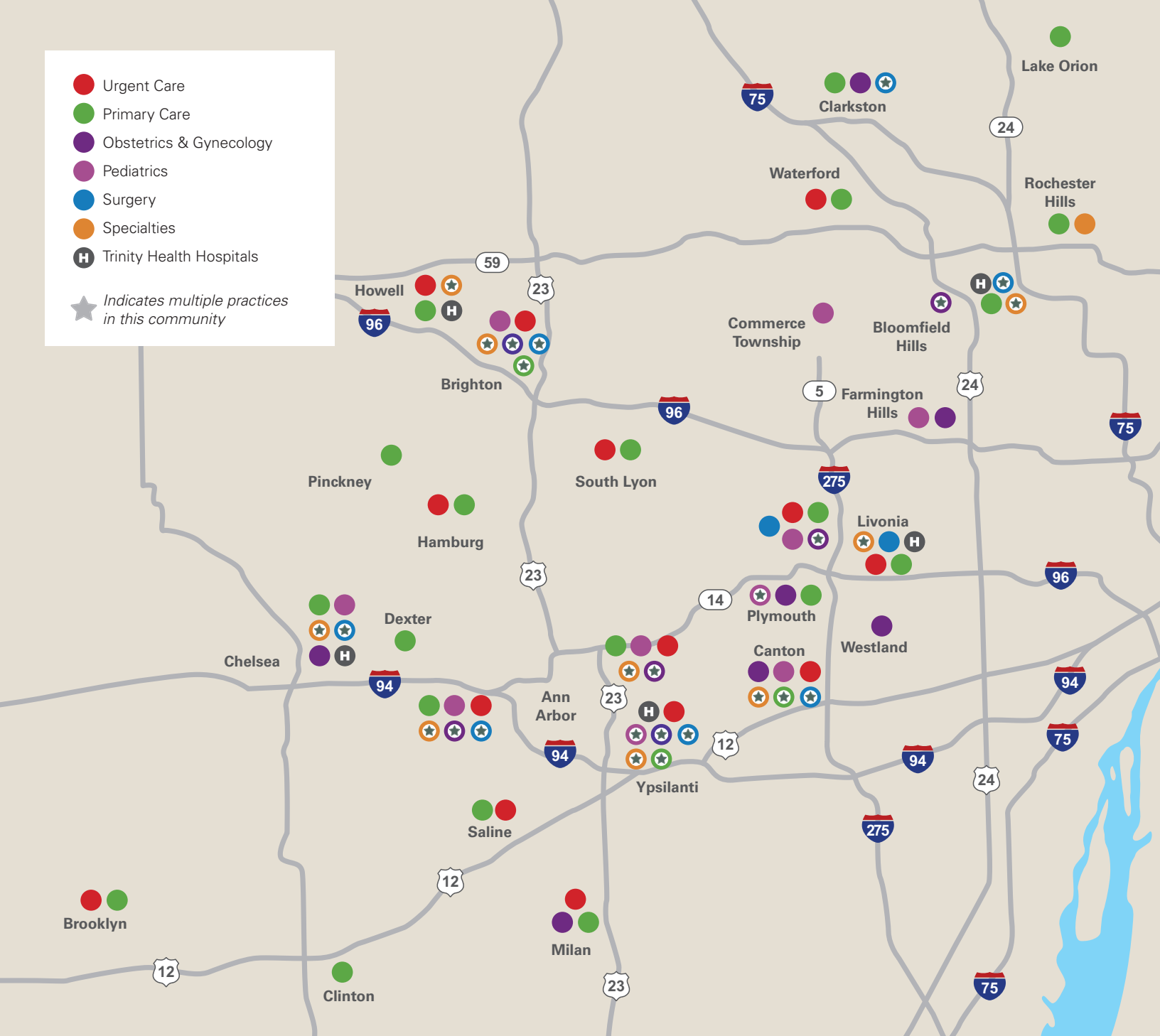
Heart Attack Symptoms  
(Chest Pain, Cold Sweat, Heartburn, Dizziness, Shortness of Breath)



Stroke Symptoms  
(Sudden Weakness, Dizziness or Speech Problems)

**When experiencing a life-threatening emergency, call 911.**

- Urgent Care
- Primary Care
- Obstetrics & Gynecology
- Pediatrics
- Surgery
- Specialties
- Trinity Health Hospitals
- ★ Indicates multiple practices in this community



We keep growing!

Visit [IHAcaredotcom/staffopenings](https://IHAcaredotcom/staffopenings) for job postings.

Please visit us online at [IHAcaredotcom](https://IHAcaredotcom) for provider and practice location updates.



IHA Medical Group

July 2025